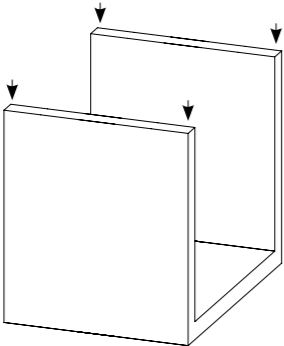


**5** If you want to use the table in a n-shape you need to perform steps 1-3 on the locations shown on the picture below.



ASSEMBLY INSTRUCTIONS

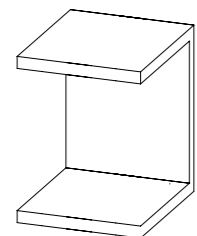
C-TABLE  
01285

Tribù nv  
Oude Heidestraat 72  
3740 Bilzen  
BELGIUM

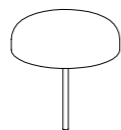
[www.tribu.com](http://www.tribu.com)  
[info@tribu.com](mailto:info@tribu.com)



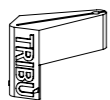
## CONTENT



1 x  
C-table



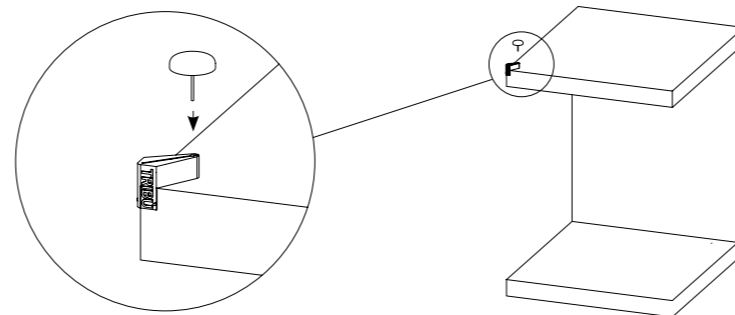
4 x  
Glider



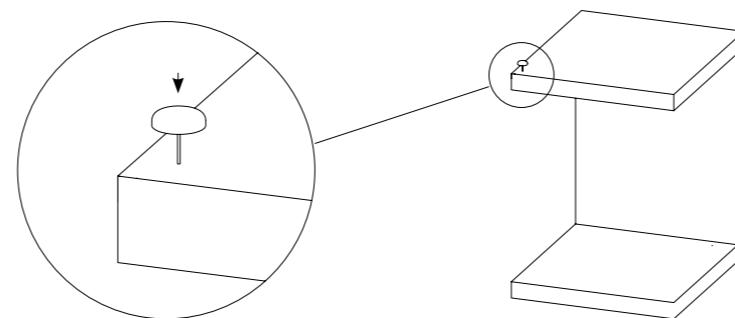
1 x  
Glider positioner

## ASSEMBLY INSTRUCTIONS

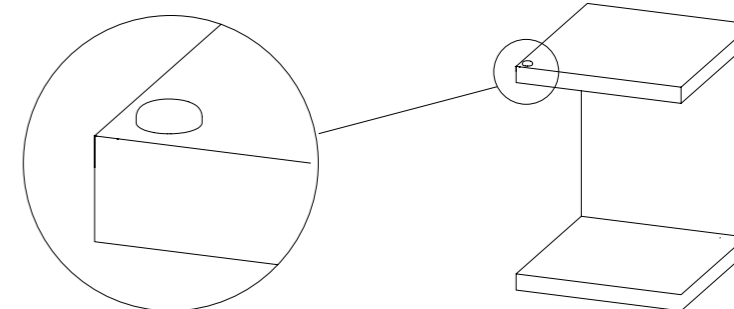
- 1 Place the glider positioner on the corner of a C-table. Insert a glider in the designated hole and lightly hammer it till the nails enters the wood.



- 2 Remove the glider positioner and hammer the glider in.



- 3 Make sure the glider is fully hammered in so the glider touches the wood.



- 4 Repeat step 1-3 for the other 3 gliders.

